

# Totaline<sup>®</sup> Acoustic Blankets

## Removable and reusable blanket insulation for sound attenuation at the source

When normal chiller operational noise is a problem the Totaline self-contained acoustic blanket insulation system provides a simple, cost-effective solution. It's ideal for use in hospitals, schools, retail malls, restaurants, libraries - wherever low noise levels are required to meet extremely sound-sensitive applications.



### Features:

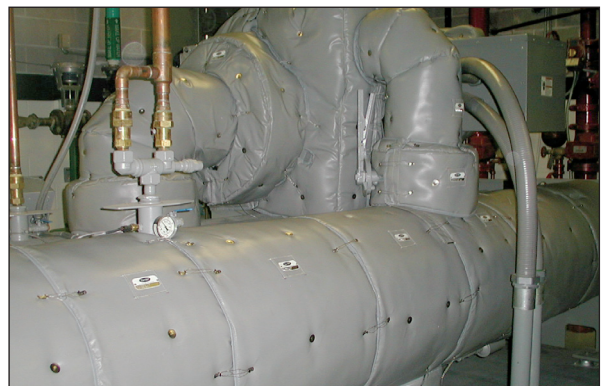
- completely removable and reusable
- average 4-8 dBA sound reduction
- allows quick & easy access
- installs with minimal effort
- guaranteed fit
- integrated fastening system
- outdoor weather-resistant construction
- self-contained insulation system
- ideal for centrifugal, screw, scroll and reciprocating compressor applications



30RB Air-Cooled Scroll Chiller



30XA Air-Cooled Screw Chiller



19XR Water-Cooled Centrifugal Chiller



# Totaline® Acoustic Blankets

## Engineered design for precise fit and reduced noise levels

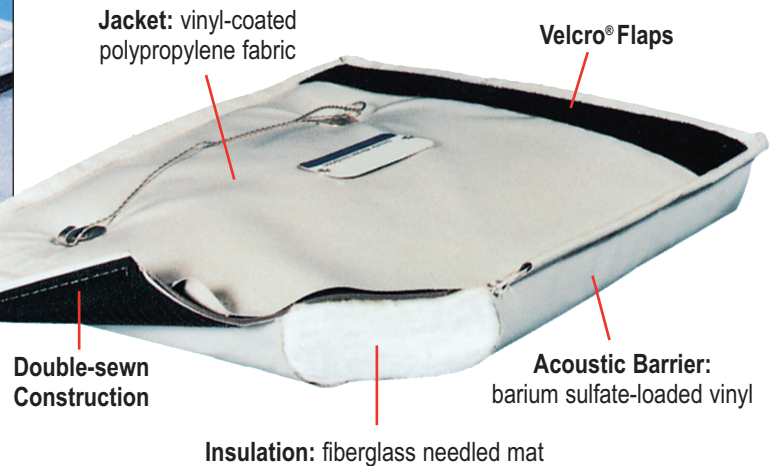
Totaline Acoustic Blanket insulation is an extremely versatile and efficient solution to common chiller noise problems. It combines a high density, needled fiberglass mat with a mass-loaded vinyl material sandwiched inside a weather proof jacketing. The purpose of the fiberglass is to reduce reflected noise and to absorb noise energy, while the mass-loaded vinyl jacketing blocks transmitted noise.

### A Perfect Fit

The Totaline Acoustic Blanket System is custom fit to the machine surface. There are no open gaps on any closing seams. Interlocking blanket segments ensure maximum acoustic performance and allow for quick and easy installation and removal.



### Quality materials and construction



### Design components - LT250A-VP

**Outer & Inner Jacket:**  
18.0 oz./sq. yd. vinyl coated

**Acoustic Barrier:**  
1 lb/sf to 2 lb/sf density barium sulfate loaded vinyl

**Insulation:**  
1.5" thick fiberglass needle mat – 11 lb/sf density

**Inner Jacket:**  
18.0 oz./sq. yd. vinyl coated, polypropylene fabric

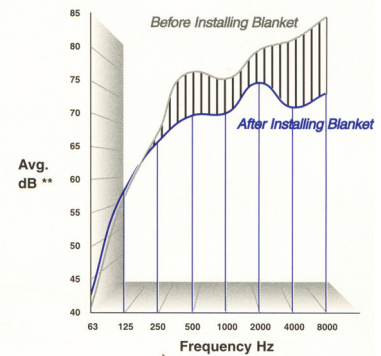
**Finished Blanket Surface Mass:**  
Equal 2.5 – 3.0 lb/sf

### Design features

- Double sewn and binded seams
- Durable PTFE Teflon® impregnated fiberglass cloth
- Aluminum nameplate embossed lettering with tag description
- Stainless steel hardware with wire-twist fastener
- Extended velcro flap on closing seams
- High density mass loaded vinyl (reflection)
- High density needled fiberglass mat filler (absorption)

### Sound test comparison

The higher the sound frequency, the more objectionable the noise. As indicated by the actual mechanical room sound test results shown here, Totaline acoustic blankets are especially effective in reducing noise at higher frequencies.



\* Typical installation - actual performance estimates will vary on an application basis

\*\* As measured to ARI sound standard 575

### Standardized packages

Standardized packages designed specifically to the existing machine model are available. Contact your local Carrier/Totaline representative for inventoried blanket packages. Non-inventoried packages require a 4-6 week normal production lead-time.

